

Majestic Mountains Quilt Blocks

For the May, 2016 block of the month drawing, let's make scrappy Majestic Mountains quilt blocks. (This block goes by many different names.)

We're using 8.5" squares for this block. One square from light fabric and one square from dark fabric. When you finish assembling the blocks, you will have two squares that can be assembled differently depending upon how the finished top will appear.



Start by taking two squares, one light and one dark and putting them right sides together. With your ruler and rotary cutter, slice through the two squares from corner to corner to make the triangles.



Piece these large 1/2 square triangle units through your machine with a 1/4" seam. Press squares open with the seam towards the dark triangle.

(NOTE: If you prefer stitching your triangle units before cutting them apart, just mark the light square by drawing a diagonal line from corner to corner. Stitch 1/4" away from the each side of the line. Then slice on the diagonal line.)

CHQG April, 2016 Block of the Month



Take the triangle squares to your cutting mat and square them up to 8" square. This is an important step. You COULD cut your original squares at 8 3/8" and perhaps get away without trimming, but I find the larger the triangle squares, the more unwieldy they get no matter how accurate your pressing and sewing is, so I cut them 8.5" and then square up to 8".

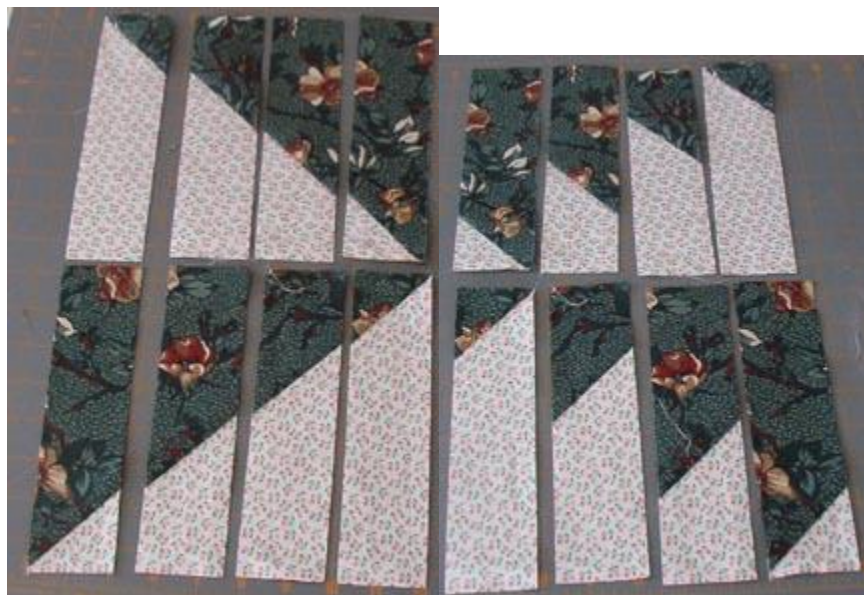


When your squares are squared up, layer them one on top of the other, with the dark of the top triangle on top of the light of the bottom. This way you will be sure that you have one 'uphill' block and one 'downhill' block when you are done cutting.



Cut 2" segments through both layers as shown.

CHQG April, 2016 Block of the Month



Carefully peel the top layer off the bottom layer and you will have uphill and downhill strips! Simply rearrange the strips into the Mountain Majesties blocks and stitch together.

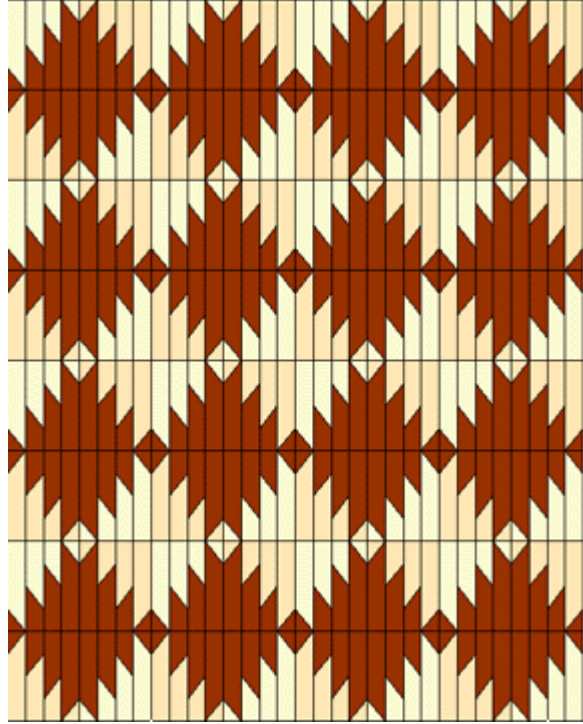


Notice that by turning the blocks you can have a dark mountain with a light sky, or a light snowcapped mountain with a dark sky behind it.

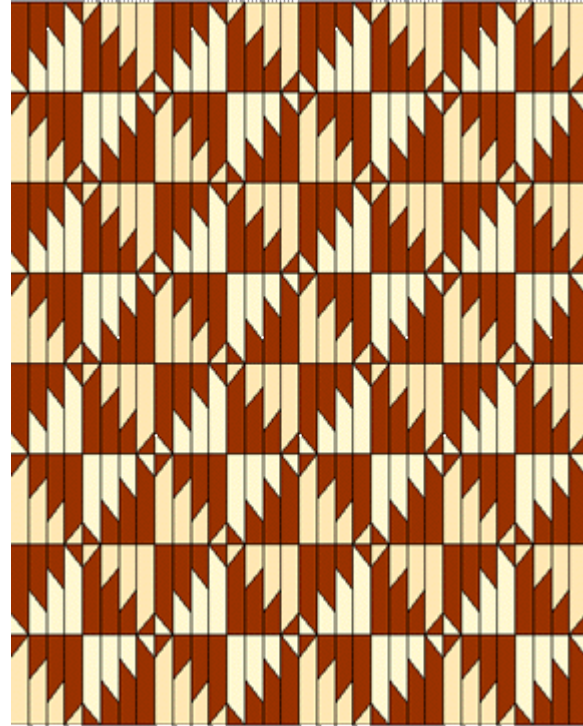
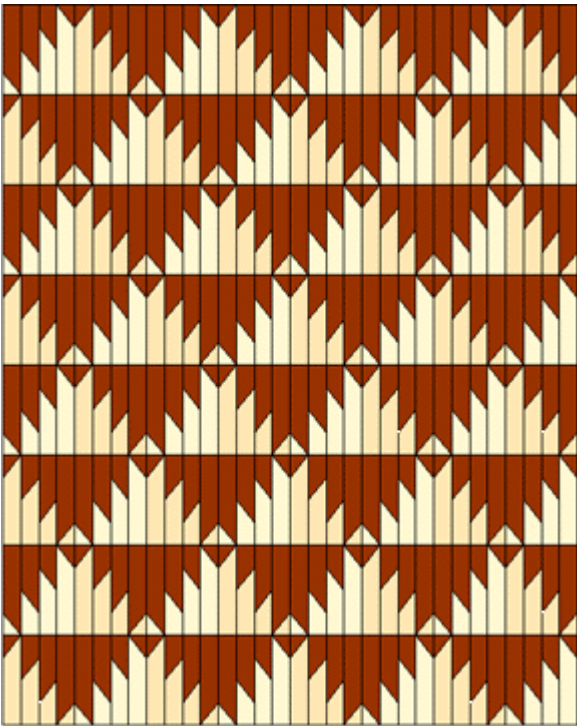
STOP: For this month, just bring the two blocks not attached to each other so that the winner will have more options when designing the whole quilt top.

CHQG April, 2016 Block of the Month

There are lots of fun ways to twist and turn these blocks to form many interesting designs. Here are just a few:

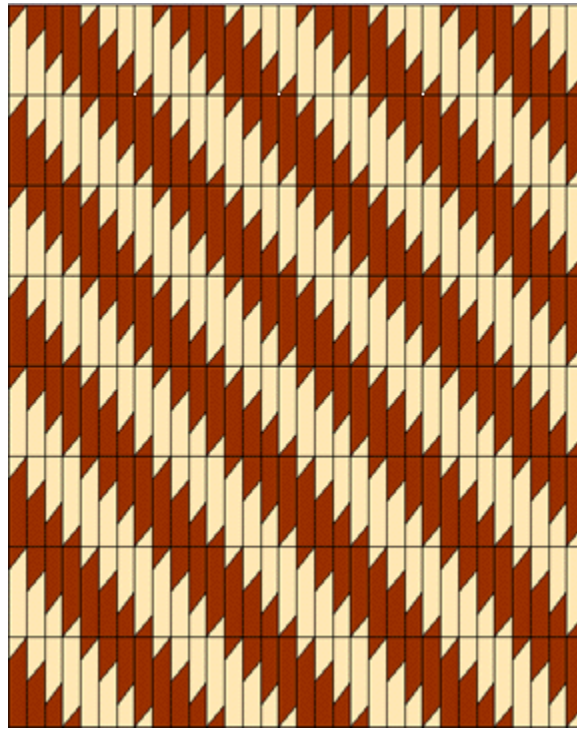


Zig Zag Mountains Stacked Lanterns



Mirror Image Mountains Jagged Diamonds

CHQG April, 2016 Block of the Month



Streak of Lightning*

Note for the streak of lightning variation, the quilt is made with all downhill blocks, no uphill blocks at all! So instead of placing your triangle-squares with right sides together, you would stack them one on top of the other both facing up and cut both squares the same way.